



Human Small Ribonucleoprotein Associated Protein B B' (SmB/B')

Origin:	Recombinant	Cat. No.:	41530
Tag:	N-terminal 6xHis	Size:	0.1 mg
Source:	<i>Spodoptera frugiperda</i> Sf9	Purity:	>90%
Other Names:	SmB/B', snRNPB/B', SmB	Species:	Human

Description

Expressed in insect Sf9 cells with total 264 AA. Mw: 27.6 KDa (calculated). N-terminal 6xHis-tag and TEV cleavage site, 25 extra AA (highlighted).

Recombinant antigen for research use or manufacturing only.

Introduction to the Molecule

Small nuclear ribonucleoprotein complexes (abbreviated as U-snRNP) are essential for splicing of precursor mRNA molecules and snRNPB is one of several nuclear proteins which are found in common among U1, U2, U4/U6, and U5 small ribonucleoprotein particles (snRNPs). Autoantibodies from patients with systemic lupus erythematosus (SLE) recognize epitopes on snRNPB/B'.

Immunological Function

As an autoantigen, SmB/B' binds with IgG-type human auto-antibodies.

Amino Acid Sequence

MSYYHHHHHDYDIPTTENLYFQGATVGKSSKMLQHIDYRMRCILQDGRIFIGTFKAFDK
HMNLILCDCDEFKIKPKNSKQAEREEKRVLGLVLLRGENLVSMTVEGPPPKDTGIARVPLAGA
AGGPGIGRAAGRGIPAGVPMQAPAGLAGPVRGVGGPSQQVMTPQGRGTVAATAASIA
GAPTQYPPGRGGPPPMGRGAPPPGMMGPPPGMRPPMGPPMGIPPGRGTPMGMPPPGMRPPP
PGMRGPPPPGMRPPRP.

Applications

Standard ELISA test, line/dot assay and microarray assay with positive/negative sera panels.

Formulation

Liquid in storage buffer (50mM Tris, 300-500mM NaCl, 10% Glycerol, Protease inhibitor, pH8.0).

Storage

Store at -80°C. Avoid repeated freezing /thawing cycles.





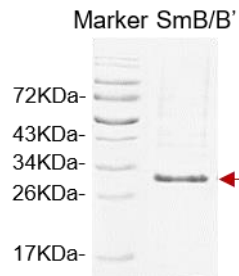
Quality Control Test

BCA to determine quantity of the protein.

SDS PAGE to determine purity of the protein.

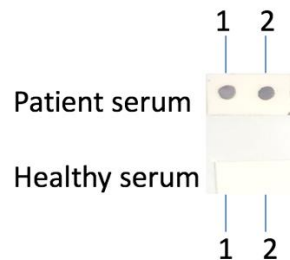
Immunodot analysis to determine functionality of protein.

SDS-PAGE Gel



Dot blot assay

Dot blot analysis of SmB



Analysis of serum from healthy subjects and patients. Recombinant autoantigens were utilized in this dot-blot assay for validation

Contact Us

- Website: www.immunodiagnostics.com.hk
- E-mail: info@immunodiagnostics.com.hk
- Tel: (+852) 2831 5526; 2831 5508
- Fax: (+852) 2816 2095

