



Human Sjogren Syndrome Antigen B (SSB/La)

Origin:	Recombinant	Cat. No.:	41600
Tag:	N-terminal 6xHis	Size:	0.1 mg
Source:	<i>Spodoptera frugiperda</i> Sf9	Purity:	>90%
Other names:	La/SSB, La, SSB	Species:	Human

Description

Expressed in insect Sf9 cells with total 432 AA. Mw: 49.8 KDa (calculated). N-terminal 6xHis-tag and TEV cleavage site, 25 extra AA (highlighted).

Recombinant antigen for research use or manufacturing only.

Introduction to the Molecule

La/SSB is a nuclear phosphoprotein involved in various aspects of RNA metabolisms. It can bind with transcripts of RNA polymerase III, process pre-tRNA precursors and act as an RNA chaperone.

Autoantibody against SSB/La are most frequently found in Sjogren's Syndrome, Systemic Lupus Erythematosus (SLE) and Subacute Cutaneous Lupus

Immunological Function

As an autoantigen, SSB/La binds with IgG-type human auto-antibodies.

Amino Acid Sequence

MSYYHHHHHHHDYDIPTTENLYFQGAAENGDNEKMAALEAKICHQIEYYFGDFNLPRDKFLK
EQIKLDEGWVPLEIMIKFNRLNRLTTDFNVIVEALSLSKAELMEISEDKTKIRRSPSKPLPEVTDE
YKNDVKNRSVYIKGFPTDATTDDIKEWLEDKGGVQLNIQMRRTLHKAFKGSIFVVFDSIESAKKF
VETPGQKYKETDLLILFKDDYFAKKNEERKQNKVEAKLRAKQEQAQKLEEDAEMKSLEEKIG
CLLKFSGDLDDQTCREDLHILFSNHGEIKWIDFVRGAKEGIIIFKEKAKEALGKAKDANNGLQ
LRNKEVTWEVLEGEVEKEALKKIIEDQQESLNKWKSKGRRFKGKGGKGNKAAQPGSGKGVQF
QGKKTGFASDDEHDEHDENGATGPVKRAREETDKEEPASKQKKTENGAGDQ

Applications

Standard ELISA test, line/dot assay and microarray assay with positive/negative sera panels.

Formulation

Liquid in storage buffer (50mM Tris, 300-500mM NaCl, 10% Glycerol, Protease inhibitor, pH8.0).

Storage

Store at -80°C. Avoid repeated freezing/thawing cycles.





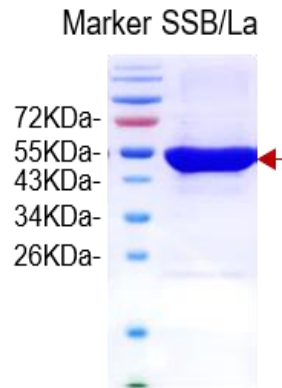
Quality Control Test

BCA to determine quantity of the protein.

SDS PAGE to determine purity of the protein.

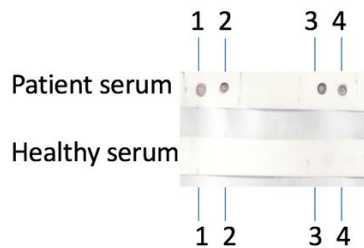
Immunodot analysis to determine functionality of protein.

SDS-PAGE gel



Dot blot assay

Dot blot analysis of La/SSB



Analysis of serum from healthy subjects and patients. Recombinant autoantigens were utilized in this dot-blot assay for validation.

Contact Us

- Website: www.immunodiagnostics.com.hk
- E-mail: info@immunodiagnostics.com.hk
- Tel: (+852) 2831 5526; 2831 5508
- Fax: (+852) 2816 2095

