



Human Glycyl-tRNA Synthetase (EJ)

Origin:	Recombinant	Cat. No.:	41A252
Tag:	N-terminal 10xHis	Size:	0.1 mg
Source:	<i>Spodoptera frugiperda</i> Sf9	Purity:	>80%
Other Names:	EJ, GARS	Species:	Human

Description

Expressed in insect Sf9 cells with total 767 AA. Mw: 86.7 KDa (calculated). N-terminal 10xHis-tag and TEV cleavage site, 29 extra AA (highlighted).

Recombinant antigen for research use or manufacturing only.

Introduction to the Molecule

For mRNA translation at the ribosomes, amino acids are covalently attached ("loaded") onto their respective tRNAs by specific amino-acyl-tRNA synthetases. Glycyl-tRNA synthetase (EJ) is specific for the amino acid glycine, and it has been shown to be a target of autoantibodies in the human autoimmune diseases, polymyositis or dermatomyositis.

Immunological Function

As an autoantigen, EJ binds with IgG-type human auto-antibodies.

Amino Acid Sequence

MSYYHHHHHHHHHDYDIPTTENLYFQGAPSRPVLLRGARAALLLLLPPRLLARPSLLLR
RSLSAASCPPISLPAAASRSSMDGAGAEVLA PLRLAVRQQGDLVRKLKEDKAPQVDVDKAVA
ELKARKRVLEAKELALQPKDDIVDRAKMEDTLKRRFFYDQAFAYGGVSGLYDFGPVGCALKNN
IIQWTRQHFIQEEQILEIDCTMLTPEPVLKTSGHVDFADFMVKDVKNCEFRADHLLKAHLQK
LMSDKKCSVEKKSEMESVLAQLDNYGQQELADLFVNYNVKSPITGNDLSPVFSNLMFKTFIGP
GGNMPGYLRPETAQGIFLNFKRLLEFNQGKLPFAAAQIGNSFRNEISPRSGLRVREFTMAEIEHF
VDPSEKDHPKFQNVADLHLYLYSAKAQVSGQSARKMRLGDAVEQGVINNTVLGYFIGRIYLYLT
KVGISPKLRFQHMENEMAHYACDCWDAESKTSYGWIEIVGCADRSCYDLSCHARATKVPL
VAEKPLKEPKTVNVVQFEPKGAIGKAYKKDAKLVMEYLAICDECYITEMEMLLNEKGFTIETE
GKTFQLTKDMINVKRFQKTLYVEEVVNPVIEPSFGLGRIMYTVFEHTFHVREGDEQRTFFSFAV
VAPFKCSVLPLSQNQEFMPFVKELSEALTRHGVSHKVDDSSGSI GRRYARTDEIGVAFGVTIDF
DTVNKTPTATLRDRDSMRQIRAEISELPSIVQDLANGNITWADVEARYPLFEGQETGKKETIEE

Applications

Standard ELISA test, line/dot assay and microarray assay with positive/negative sera panels.

Formulation

Liquid in storage buffer (50mM Tris, 300mM NaCl, 10%Glycerol, pH 7.4).





Storage

Store at -20°C . Avoid repeated freezing/thawing cycles.

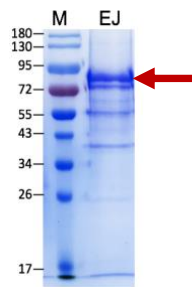
Quality Control Test

BCA to determine quantity of the protein.

SDS PAGE to determine purity of the protein.

Immunodot analysis to determine functionality of protein.

SDS-PAGE Gel



Contact Us

- Website: www.immunodiagnostics.com.hk
- E-mail: info@immunodiagnostics.com.hk
- Tel: (+852) 2831 5526; 2831 5508
- Fax: (+852) 2816 2095

