



Human Exosome Component 9 (PmScl 75)

Origin:	Recombinant	Cat. No.:	41650
Tag:	N-terminal 6xHis	Size:	0.1 mg
Source:	<i>Spodoptera frugiperda</i> Sf9	Purity:	>90%
Other Names:	EXOSC9	Species:	Human

Description

Expressed in insect Sf9 cells with total 480 AA. Mw: 53.8 KDa (calculated). N-terminal 6xHis-tag and TEV cleavage site, 25 extra AA (highlighted).

Recombinant antigen for research use or manufacturing only.

Introduction to the Molecule

Exosome component 9 (EXOSC9 or PmScl-75) is the non-catalytic component of RNA exosome complex, which is involved in the processing and degradation of RNAs. PmScl-75 is essential in the binding and presentation of RNA for ribonucleolysis, and acts as a scaffold for the accessory proteins or complexes, associates with the catalytic subunits and facilitates their activities.

Immunological Function

As an autoantigen, PmScl-75 binds with IgG-type human auto-antibodies.

Amino Acid Sequence

MSYYHHHHHDYDIPTTENLYFQGAKETPLSNCERRFLLRAIEEKKRLDGRQTYDYRNIRIS
FGTDYGCCIVELGKTRVLGQVSCELVSPKLN RATEGILFFNLELSQMAAPAFEPGRQSDLLVCLN
RLMERCLRNSKCIDTESLCVVAGEKQVWQIRVDLHLLNHDGNIIDAASIAAIVALCHFRRPDVSV
QGDEVTLYTPEERDPVPLSIHHMPICVSFAFFQQGYLLVDPNEREERVMDGLLVIAMNKHREIC
TIQSSGIMLLKDQVLRCSKIAGVKVAEITELILKALENDQKVRKEGGKFGFAESIANQRITAFK
MEKAPIDTSDVEEKAEEIIAEAEPPSEVSTPVLWTPGTAQIGEGVENSWDLEDSEKEDDEGG
GDQAIILDGKIMDTGVEVSDIGSQELGFHHVGGTGLEFLTSDAPIILSDSEEEEMIIIEPDKNPK
KIRTQTTSKQEKAPSKPKPKRRKKRAAN

Applications

Standard ELISA test, line/dot assay and microarray assay with positive/negative sera panels.

Formulation

Liquid in storage buffer (50mM Tris, 300-500mM NaCl, 10% Glycerol, Protease inhibitor, pH8.0).

Storage

Store at -80°C. Avoid repeated freezing/thawing cycles.





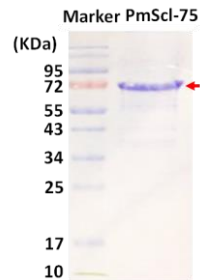
Quality Control Test

BCA to determine quantity of the protein.

SDS PAGE to determine purity of the protein.

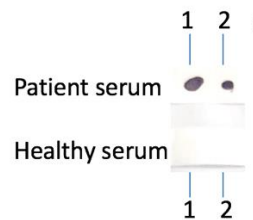
Immunodot analysis to determine functionality of protein.

SDS-PAGE Gel



Dot blot assay

Dot blot analysis of PmScl-75



Analysis of serum from healthy subjects and patients. Recombinant autoantigens were utilized in this dot-blot assay for validation

Contact Us

- Website: www.immunodiagnosics.com.hk
- E-mail: info@immunodiagnosics.com.hk
- Tel: (+852) 2831 5526; 2831 5508
- Fax: (+852) 2816 2095

