



Human Formiminotransferase Cyclodeaminase (LC-1)

Origin:	Recombinant	Cat. No.:	41A052
Tag:	N-terminal 6xHis	Size:	0.1 mg
Source:	<i>Spodopterafrugiperda</i> Sf9	Purity:	>90%
Other names:	LC1, FTCD	Species:	Human

Description

Expressed in insect Sf9 cells with total 565 AA. Mw: 61.9KDa (calculated). N-terminal 6xHis-tag and TEV cleavage site, extra 25 AA (highlighted).

Recombinant antigen for research use or manufacturing only.

Introduction to the Molecule

LC1 is an enzyme which catalyzes the conversion of formiminoglutamate and tetrahydrofolate into formiminotetrahydrofolate and glutamate. As a bio-functional enzyme of tetrahydrofolate synthesis, it is the target antigen of anti-LC1 (liver cytosol antigen type 1) autoantibodies. Presence of LC1 autoantibodies is a marker for type 2 autoimmune hepatitis.

Immunological Function

As an autoantigen, LC1 binds with IgG-type human autoantibodies.

Amino Acid Sequence

MSYYHHHHHDYDIPTTENLYFQGASQLVECVPNFSEGKNQEVIDAISGAITQTPGCVLLD
VDAGPSTNRTVYTFVGPPECVVEGALNAARVASRLIDMSRHQGEHPRMGALDVCPPFIPVRGVS
VDECVLCAQAFGQRLAEELDVPVYLYGEAARMDSRRTLPAIRAGEYEALPKKLQQADWAPDFGP
SSFVPSWGATATGARKFLIAFNINLLGTKEQAHRIALNLREQGRGKDQPGRLKKVQGIGWYLDE
KNLAQVSTNLLDFEVTALHTVYEETCREAQELSLPVVGSQLVGLVPLKALLDAAAFYCEKENLFIL
EEEQRIRLVVSRGLDSLCPFSPKERIIEYLVPERGPERGLGSKSLRAFVGEVGARSAPGGGSV
AAAAAAMGAALGSMVGLMTYGRRQFQSLDTTMRRLIPPFREASAKLTTLVADAEAFYAYLEAM
RLPKNTPEEKDRRTAALQEGLRRAVSVPPLTAETVASLWPALQELARCGNLACRSDLQVAAKAL
EMGVFGAYFNVLINLRDITDEAFKQDIHHRVSSLLQEAQTQAALVLDCLETRQE

Applications

Standard ELISA test, line/dot assay and microarray assay with positive/negative sera panels.

Formulation

Liquid in storage buffer (50mM Tris, 300-500mM NaCl, 10% Glycerol, Protease inhibitor, pH8.0).





Storage

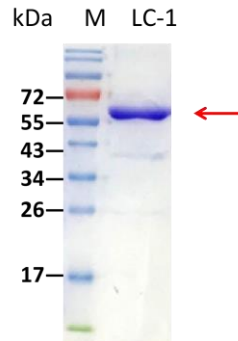
Store at -80°C . Avoid repeated freezing/thawing cycles.

Quality Control Test

BCA to determine quantity of the protein.

SDS PAGE to determine purity of the protein.

SDS-PAGE gel



Contact Us

- Website: www.immunodiagnostics.com.hk
- E-mail: info@immunodiagnostics.com.hk
- Tel: (+852) 2831 5526; 2831 5508
- Fax: (+852) 2816 2095

