



## Human chromodomain-helicase-DNA-binding protein 4 (Mi2-beta)

<b>Origin:</b>	Recombinant	<b>Cat. No.:</b>	41A190
<b>Tag:</b>	N-terminal 6xHis	<b>Size:</b>	0.1 mg
<b>Source:</b>	<i>Spodoptera frugiperda</i> Sf9	<b>Purity:</b>	>90%
<b>Other Names:</b>	CHD4, Mi2- $\beta$ , Mi2b	<b>Species:</b>	Human

### Description

Expressed in insect Sf9 cells with total 1936 AA. Mw: 221.0 KDa (calculated).  
N-terminal 6xHis-tag and TEV cleavage site, 25 extra AA (highlighted).

**Recombinant antigen for research use or manufacturing only.**

### Introduction to the Molecule

The Mi-2 protein is the myositis specific antigen, which is over-regulated during muscle regeneration in DM (dermatomyositis) patients.

### Immunological Function

As an autoantigen, Mi-2 $\beta$  binds with IgG-type human auto-antibodies.

### Amino Acid Sequence

**MSYYHHHHHDYDIPPTTENLYFOGAASGLGSPSPCSAGSEEDMDALLNNSLPPHPENE**  
**EDPEEDLSETETPKLKKKKKPKKPRDPKIPKSKRQKKERMLLCRQLGDSSGEGPEFVEEEEEVAL**  
**RSDSEGSDYTPGKKKKKLGPKKEKSKSKRKEEEEEEDDDDDSKPEKSSAQLLEDWGMEDI**  
**DHVFSEEDYRTLNYKAFSOFVRPLIAAKNPKIAVSKMMMLVLGAKWREFSTNPNPKGSSGASV**  
**AAAAAAAVAVVESMVTATEVAPPPPPVEVPIRKAKTKEGKGNARRKPKGSPRVPDAKKPKPKK**  
**VAPLKIKLGGFGSKRKRSSSEDDDLDVESDFDDASINSYSVSDGSTSRSSRSRKKLRRTTKKKK**  
**KGEEEVTAVDGYETDHQDYCEVCQQGGEIILCDTCPRAYHVMVCLDPDMEKAPEGKWSCPHCE**  
**KEGIQWEAKEDNSEGEEILEEVGGDLEEEEDDHHMEFCRVCKDGGELLCCDTCPSYHIHCLNP**  
**PLPEIPNGEWLCPRCTCPALKGKVQKILIWKWGQPPSPTVPRPPDADPNTPSPKPLEGRPERQF**  
**FVKWQGMSYWHCSWVSELOLELHCQVMFRNYQRKNDMDEPPSGDFGGDEEKSRKRKNKDP**  
**KFAEMEERFYRYGKPEWMMIHRILNHSVDKKGHVHYLIKWRDLPHYDQASWESEDVEIQDYDL**  
**FKQSYWNHRELMRGEGRPGKLLKVKLRKLERPPETPTVDPTVKYERQPEYLDATGGTLHPYO**  
**MEGLNWLRFSWAQGTDITILADEMGLGKTAVFLYSLYKEGHSKGPFLVSAPLSTIINWEREF**  
**EMWAPDMYVVTVYVGDKDSRAIIRENEFSFEDNAIRGGKKASRMKKEASVKFHVLLTSYELITID**  
**MAILGSIDWAACLIVDEAHLKNNQSKFFRVLNGYSLOHKLLLTGTPLQNNLEELFLLNFLTPER**  
**FHNLEGFLEEFADIAKEDQIKKLHDMLGPHMLRRLKADVFKNMPSKTELIVRVELSPMOKKYYKY**  
**ILTRNFEALNARGGGNOVSLNVMMDLKKCCNHPYLFVAAMEAPKMPNGMYDGSALIRASGK**  
**LLLLQKMLKNLKEGGHRVLIQSMTKMLDLEDFLEHEGYKYERIDGGITGNMROEAI DRFNAP**  
**GAQQFCFLSTRAGGLGINLATADTVIYDSWNPNDIQAFSRAHRIGQNKKVMYIRFVTRAS**  
**VEERITQVAKKMMMLTHLVVRPGLGSKTGSMSKQELDDILKFGTEELFKDEATDGGGDNKEGE**  
**DSSVIHYDDKAIERLLDRNODETEDELOGMNEYLSSFKVAQYVVREEEMGEEEVEREIIKQE**  
**ESVDPDYWEKLLRHHYEQQOEDLARNLGKGRIRKQVNYNDGSOEDRDWQDDQSDNQSDY**





SVASEEGDEDFDERSEAPRRPSRKGLRNDKDKPLPPLLARVGGNIEVLGFNARQRKAFLNAIMR  
YGMPPQDAFTTQWLVRDLRGKSEKEFKAYVSLFMRHLCEPGADGAETFADGVPREGLSROHVL  
TRIGVMSLIRKKVQEFHVNGRWSMPELAEVEENKKMSQPGSPSKTPTPSTPGDTPNTPAP  
VPPAEDGIKIEENSLKEEESIEGEKEVKSTAPETAIECTQAPAPASEDEKVVVEPPEGEEKVEKAE  
VKERTEEPMETEPKGAADVEKVEEKSAIDLTPIVVEDKEEKKEEEEKKEVMLONGETPKDLNDE  
KQKKNIKQRFMFNIADGGFTELHSLWQNEERAATVTKKTYEIWHRRHDIWLLAGIINHGYARW  
QDIQNDPRYAILNEPFKGEMNRGNFLEIKNKFLARRFKLLEQALVIEEQLRRAAYLNMSSEDPSPH  
SMALNTRFAEVECLAESHQHLKESMAGNKPANAVLHKVLKQLEELLSDMKADVTRLPATIARI  
PPVAVRLQMSERNILSRLANRAPEPTPQQVAQQQ

## Applications

Standard ELISA test, line/dot assay and microarray assay with positive/negative sera panels.

## Formulation

Liquid in storage buffer (50mM Tris, 300-500mM NaCl, 10% Glycerol, Protease inhibitor, pH8.0).

## Storage

Store at  $-80^{\circ}\text{C}$ . Avoid repeated freezing/thawing cycles.

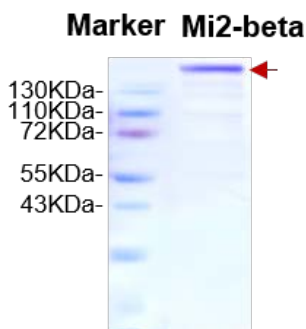
## Quality Control Test

BCA to determine quantity of the protein.

SDS PAGE to determine purity of the protein.

Immunodot analysis to determine functionality of protein.

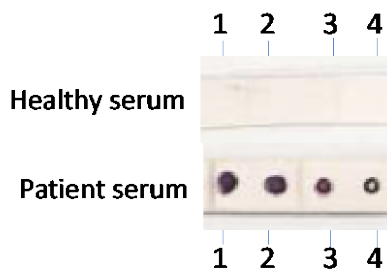
## SDS-PAGE Gel





## Dot blot assay

Dot blot analysis of Mi2-beta



## Contact Us

- Website: [www.immunodiagnosics.com.hk](http://www.immunodiagnosics.com.hk)
- E-mail: [info@immunodiagnosics.com.hk](mailto:info@immunodiagnosics.com.hk)
- Tel: (+852) 2831 5526; 2831 5508
- Fax: (+852) 2816 2095

