



Human IA-2 (Insulinoma-associated protein 2, Tag free, intracellular domain 601-979)

Origin:	Recombinant	Cat. No.:	
Concentration:	1.289mg/ml	Size:	0.1 mg
Source:	<i>Entamoeba coli</i> E.coli	Purity:	>95%
Other names:	Islet cell antigen (ICA512), islet tyrosine phosphatase-like protein	Species:	Human

Description

Expressed in E.coli with total 391AA. Mw: 43.1 kDa(calculated).

Recombinant antigen for research use or manufacturing only.

Introduction to the Molecule

Insulinoma-associated protein (IA-2), also called islet cell antigen 512 (ICA 512), is a member in protein tyrosine phosphatase (PTP) family and one of the major targets of Type 1 diabetes diagnosis. Majority of IA2 autoantibody epitopes are located within intracellular domain (601-979aa). IA2 is expressed in neuroendocrine cells, pituitary cells and islet cells.

Immunological Function

As an autoantigen, IA2 binds with IgG-type human auto-antibodies.

Applications

Bio-functional study, Elisa assay, radioimmunoassay

Amino Acid Sequence

GSENLVYFQGARQHARQQDKERLAALGPEGAHGDTTFEYQDLQRQHMAKSLFNRAEGPPEPSR
VSSVSSQFSDAAQASPSSHSSTPSWCCEPAQANMDISTGHMILAYMEDHLRNRDRLAKEWQA
LCAYQAEPNTCATAQGEENIKKNRHPDFLPYDHARIKLVESPSRSDYINASPIIEHDPMPAY
IATQGPLSHTIADFWQMVWESGCTVIVMLTPLVEDGVKQCDRYWPDEGASLYHVYEVNLVSEH
IWCEDFLVRSFYLNKVNQTQETRTLQFHFLSWPAEGTPASTRPLLDFRKVNKCYRGRSCPIIVH
CSDGAGRTGTYLIDMVLNRMAGKGVKEIDIAATLEHVRDQRPGLVRSKDKQFEFALTAVAEVNA
ILKALPQLE

Formulation

Liquid at 1.289 mg/mL in PBS with protease inhibitor, pH7.4.





Storage

Store at -80°C . Avoid repeated freezing/thawing cycles.

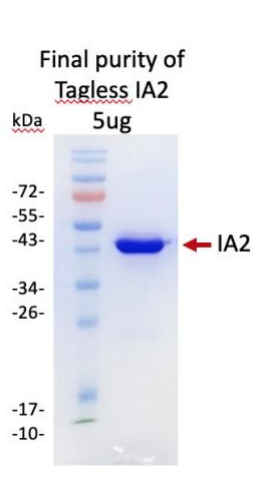
Quality Control Test

BCA to determine quantity of the protein.

SDS PAGE to determine purity of the protein.

Elisa assay analysis to determine functionality of protein.

SDS-PAGE gel



Contact Us

- Website: www.immunodiagnosics.com.hk
- E-mail: info@immunodiagnosics.com.hk
- Tel: (+852) 2831 5526; 2831 5508
- Fax: (+852) 2816 2095

